

LivingSoft

News You Can Use

LivingSoft Subscriber Newsletter | Volume 8

Pre-Order Dress Shop Sew Quick Summer Casuals and Save 20%!



The patterns in this collection are ideal for experienced sewers in a hurry, or for newer users looking for patterns with minimal construction and fit challenges. There are few fitting darts! Neck openings are enlarged to pull over the head rather than use button closures. Fit levels are generally casual with a few stretch knit designs. 28 hot new patterns are included. [Click here](#) for more details.

Quick To Sew – Easy To Fit

The Sew Quick patterns can be cut and assembled in about 90 minutes!

Help Files Expanded



Help Files in the program have been greatly expanded. Take a look at our new Library of Sewing and Tool Use Tips!

Starting with the release of the Illusions Collection, which has specific designs for both the Casual and Comfort Fit Levels, dresses which flow like a waterfall over the body, and the elegant side panel jackets which are found in all the high end shops. New “How To Articles” may be found in the HELP Menu.

Illusions users were given new tools along with new designs to try out the “new” fit levels designed to offer a slightly more comfortable fit without the bagginess under the arms and else where that unfitted garments offer.

These fit levels are now available with the FIT TOOL for all patterns.

We added some new design elements to Illusions such as but not limited to godets and shoulder pleats. We added a new tool to “user define” the height, width and placement of the godets and/or pleats or vents.

The Spring & Summer Collection 2005 offers a wide variety of wonderful, summery, close fit and very close fit knits as well as soft showy elegant dresses and skirts with exciting hems. You'll also find the close fit levels so enjoyed by our younger users in garments such as cropped low rise Capri's and quick fit stretch tops.

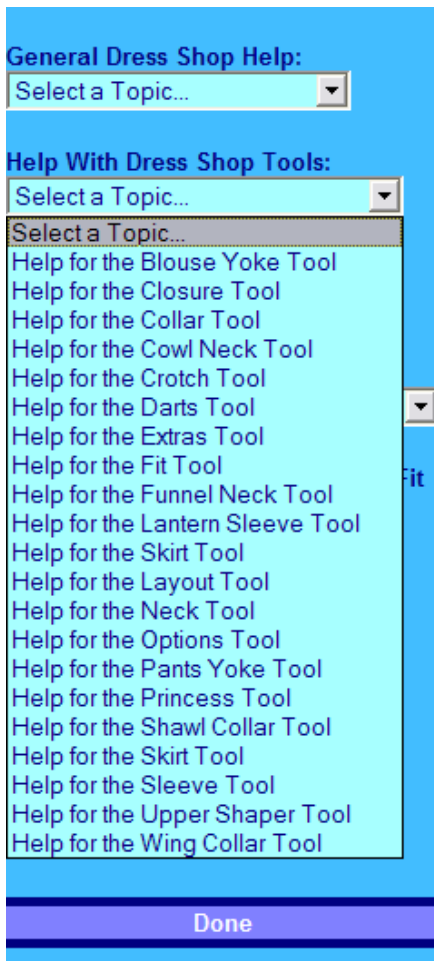
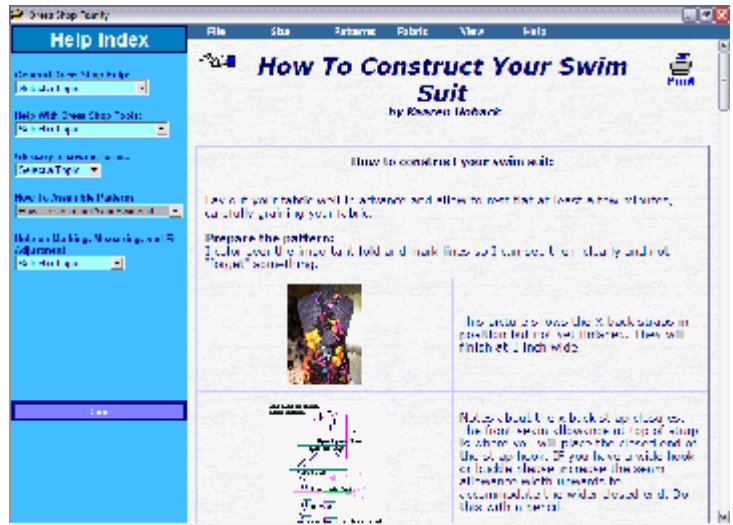
The Active Wear 2 release features swim suits, exercise gear, and dance wear and sporting clothing. We included articles to help compute your fabric's stretch and apply it to your swimsuit, show how to work with stretch fabrics and even insert elastic into necklines and leg openings.

We made a new area in the Help Files which deals both with how to use the tools, and how to assemble the garments. These articles are written by Livingsoft team members and advanced users. You will find the authors name on each article.

Each new Tool such as:

- The Princess Designer
- Fashion Designer 1
- Fashion Designer 2

Has it's own "How to Use the Tools articles.

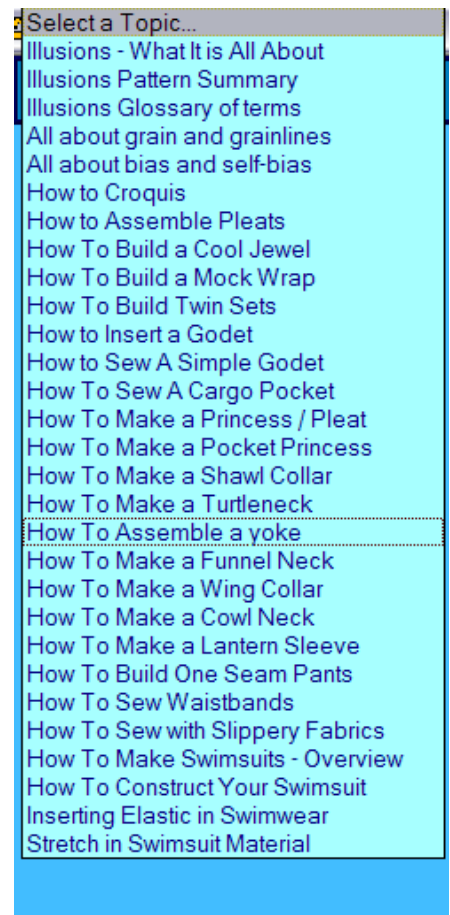


It has been decided to offer general assembly instructions for even our older silhouettes and designs. You will find these instructions being added to as they are completed and time permits.

You will always find a helpful "Tell Me More" article when you open any tool such as those for sleeve, neck, shaper, closure, crotch or skirt tools. Look to the left near the top of the tool page to find "Tell me More..." Click the link and you will be taken to the appropriate article.

When a design requires a stretch factor you will find a tag on the pattern Show All page and under Mia defining the amount of stretch needed, as well as a link to a wonderful, comprehensive Fabric Guide. This guide will direct you to

an article on "How to Compute your fabric stretch percentage".



We would also like to point out that there is another huge list of active links in our Help Files under: "On the web". You will need to have your ISP running but no matter what time of day or night you may feel stumped chances are you will find the answer to your assembly questions here. These links are supplied by colleges and universities and, among their many articles, include how to insert a zipper, apply a facing, and construct a welt pocket.

Please check out Help> Help Index to find many of these articles complete with graphics as visual aids to assist you in your design journey.

Running a Dress Shop User Group

By Marj Jensen

What makes a good user group? People who love to sew and who are committed to making DS software do the work of pattern drafting. (Tweaks and hand-drafting are OK, but only if we can't figure out a computer-based way to do the job.)

"Show and tell" is the heart of a good meeting: what works, what looks good or doesn't measure up, what users wouldn't do again, and/or what kind of clothes users need. Some garments are done; others are "works in progress."

No "guru" is required. For fitting, one models and everyone comments (often with pins in hand to show what's needed) and works with tape measures; then we figure out what changes need to be made in DS measurements and/or ease to turn out a better fit on the next garment. Having DS on a computer for the group to see is almost mandatory; it's awfully hard to remember which software change or group of changes will produce a particular result if we haven't seen the program do it.

Nuts and bolts about keeping a group going:

- maintain an up-to-date email list
- agree on the next meeting's date before anyone leaves the current meeting
- send notices a week or so in advance to your local email list, to the Dress Shop discussion on-line, and to any local groups like ASG
- ask users to email if they're coming or not coming
- prepare in advance directions to the meeting place so they can be emailed easily to people who express interest
- offer simple food or ask people to bring what they want

The bottom line? Get together a few "friends I haven't met yet" and talk DS, sewing, fabric, fashion, and whatever interests the people who come.

Q&A



Q. I have just had a quick look and can't see the sleeve designer. All I get is a standard type sleeve editor.

A. In order to use your Sleeve Designer, you must first select Custom Sleeve from the Sleeves options within the grid over Mia. All standard sleeves use the Sleeve Editor.

Q. I installed my program and put in my key codes and am having a problem getting it started. It keeps giving me "invalid code". Do I need new keycodes?

A. If you are running a very early version of Dress Shop that required User Name and Activation Code, your current keycodes will not work until you update your program. Updates for both Dress Shop 5 & Dress Shop 6 are available from our web site at <http://www.livingsoftnw.com/Update.htm>.

If your current Dress Shop 5 program is version 5.18 or earlier, you will need to get the full program build from: <http://www.livingsoftnw.com/Downloads.htm>

Your keycodes contain the numbers 1 (one) and 0 (zero), never the letters O, L or I. If you are entering your codes with these letters and not numbers, you will get the Invalid code prompt.

Q. I want to send by email, my measurements and a picture of the strange draft I am getting, but don't know how to do it.

A. To send your measurement file as an attachment to an email: go into My Computer>C drive>Program Files>LivingSoft>DressShop. In your DressShop folder, look for the file named MyDSMeasurements.txt. This is an individual file located below the sub folders within the Dress Shop folder. Once you locate the file, place your cursor over it and right-click one time. In the resulting pop-up menu, select Send to>Mail recipient. Put the recipients address in the email, along with a detailed explanation of the problem and send it on. To send your measurements to support, enter the address support@livingsoftnw.com

To create and send a picture of the drafted garment, draft your garment, then go to the print page. While the pattern is on the screen in quarter scale, hold down your "Alt" key on your keyboard (lower left corner of the keyboard) and then in your top row of keys on the keyboard, select the "PrtScn" or Print Screen key (to the right of all your F1 - F12 keys). This will capture the image that is on your screen. It will look like nothing has happened, but not to worry. Then go to Start>Programs>Accessories and locate and select Paint (included with all Windows versions). When your Paint program opens, in the upper right side, locate the dashed rectangle and click on it. Then place your cursor on the blank white area, right click one time and in the pop-up menu, select Paste. Save the file as a ".jpg" and then you can send it as an attachment to an email.

Q. Can I use the Problem Report to send in my measurements?

A. You can submit your measurements within a Problem Report. Be sure to include an explanation of the problem you are having. If you can get the problem occurring, on the screen at the time you submit the report, we will be able to collect more information that can help us better advise you.

When you submit a problem report form, the current measurements being used at that time, plus your printer settings and product activation codes entered will be sent with the form so we will be able to duplicate what you are looking at. If the problem you are having is with your personal measurements, most often your report will be forwarded to support.

Problem Reports go to the programmer. He can look at problems that may be being caused by the program. He can also help (somewhat) with a limited class of measurement problems and advise about those. These include missing measurements or values that are so far out of the normal range that they seriously distort the pattern to such an extent that anyone looking at it would say "that pattern is broken". He can also advise people regarding which measurements have what effect. Shoulder line too steep, waist tilt not right, crotch curve the wrong shape - He can answer questions about that.

He can make changes to the program to correct problems that are in the program. Those fixes then get included in the next update.

What he cannot do (and therefore what you should not be using the problem reports for) includes:

1. Advise you about the fit of your measurements. He cannot see your body, so he cannot tell you if these measurements will fit or not. He can only tell you whether they will produce a reasonable looking pattern.
2. Advise you about how to remove a wrinkle. This is too body dependent.

3. Advise about sewing issues. He is not a sewer. He is a programmer that works with sewers.
4. Advise about hardware issues.
5. Deal with accounting issues.
6. Deal with order problems and shipping questions.

Q. I bought some Add-on sets a couple of years ago and now I can't find them in my program.

A. At the time that Livingsoft Northwest took over development and sales of Dress Shop, customer sales and ownership records were put into a newly written online system that shows you (and Livingsoft) what you own. With the staff changes that were happening at that time, some records did not get transferred to the new company.

Go to the LivingSoft web site at www.livingsoftnw.com and log into "Your Account". Your account page will list exactly what the current Livingsoft account records show that you own. If ownership of something that you purchased prior to December 2003 does not appear in the current Livingsoft "Your Account" lists, you will need to contact Annette (Annette@livingsoft.com) to correct your records. Only Annette might possibly have some record of it somewhere in the accounting files of the former Livingsoft Corporation. These may be prior electronic files that did not convert properly. Or, they may be paper files that had not been entered into the electronic files at all. She will have to see a receipt or you will have to help her find the record (purchase date might help) in the accounts of the former Livingsoft company.

Q. My User Manual will not open.

A. If you are using Windows operating systems Win98 or later with the free Reader on your system, you should be able to display the DS Manual. If you see the white screen when opening the manual you need to open the Reader program, go to Edit, Preferences, Internet, and select the options to display Reader in web browser window, click OK and restart the computer for changes to take effect.

If you have newly installed Adobe Reader, you must register it before it will open the manual.

Adobe Reader does not over-write previous versions. It simply adds additional version to your computer. If you have a previous version of Adobe reader on your system, please go to Add/Remove Programs and remove any version(s) that you currently have before installing a newer version. Multiple versions can create a conflict resulting in not being able to access the manual.

LivingSoft Links

Do you want to join our online community, where information on the use of Livingsoft software, user groups, and help resources is available? It's easy and it's free. Just use the "Livingsoft Community" link on our home page at www.livingsoftnw.com Or you can go directly to <http://livingsoftnw.groupee.net/eve>.

To subscribe to this newsletter, you can register free [here](#) by creating a new account. If you received this from Info@Livingsoftnw.com, you are registered and are subscribed. You can also modify your settings [here](#).

To write directly to Livingsoft for technical support, e-mail support@livingsoftnw.com. Submit comments, suggestions, or proposals for articles to Newsletter@livingsoftnw.com.

You can order from our website at <http://www.livingsoftnw.com> or call us at (800) 316-6354.