

Painting/Craft Smock

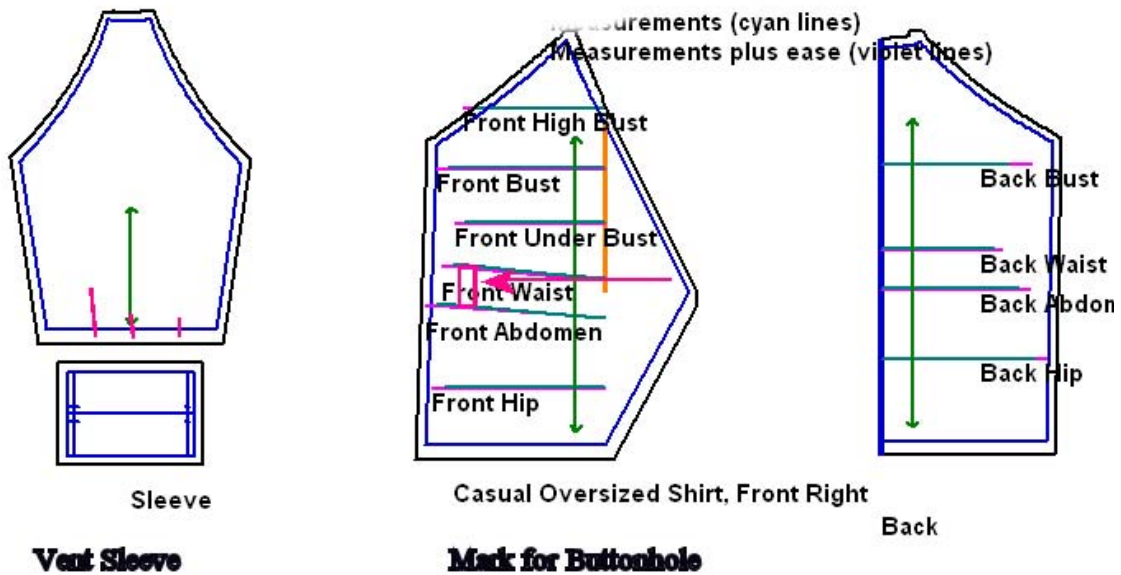
This stretch raglan sleeved over sized shirt pattern has a shaped front closure a pair of ties , ¾ length sleeves with cuff and is long enough to hit top of thigh or even mid thigh.

The smock is ideal for the crafter or painter to protect clothing while working with glues and paints.



Great for a real cover up in the kitchen.

Suitable for children in elementary school, as it is an easy on and off cover up., ties at center back. (For children use a Velcro dot on the over lap “point” piece in lieu of ties.)



cut two ties- total around waist by 2" plus seam allowance wide

I used inexpensive light weight cotton in a dark navy color with small print so my paint splashes don't show too much.

I resized this to a comfort fit level so it may be worn over normal clothing.

Please change one thing I can not preset for you.

Select the sleeve tool, and with the grid on count the grid at sleeve hem circumference and add three to that number and enter.

Optional:

Sleeve vent:

Mark the new hem circumference in quarters.. On the quarter mark line nearest to the back underarm edge mark for a vent.

Cut a rectangle 2 inches by vent length plus 1/2 inch for the vent placket.

For an adult use 5-6 inches high for a small child use 3-4 inches in height.

Facings: Lay out the pattern front, sleeve and side with the neck edge stitch lines over lapping and trace off a desired full front facing. (sorry, right now we can not get a shaped facing to match Lay the back neck facing down and resize to meet the front facing which should be drawn to the top of grain line on the sleeve (Lay a rule down along the grain line and slide it up to neck edge and mark.)

OR plan on finishing the center front and around neck with a bias binding, Use your serger with wooly nylon and a narrow rolled hem, or just turn under seam allowances topstitch and press. This is a smock not a couture garment.

Mark for the button hole on the front as shown. Overlap the side pieces so you see where the point comes to on the opposite side

The button hole is centered on the waist reference line.

Ties (optional) are the full waist measurement (front and back long) by desired width. You may eliminate the need for the ties and button holes by using Velcro dots to close.

Construction tips:

Sew the fronts to front sleeves, sew the back to sleeve backs, add a facing or bias bind the neck and center front. (Add the ties to the point of the center front). (If using bias remove the neck seam allowance front and back.)

Add a placket to the sleeve vent area, stitch the rectangle of the vent open (right sides together) cut up the middle of the vent, turn press and top stitch, add cuff if desired.

The ties are added at the point of the closure on center front and tie with the underlap side tie coming through the button hole.

These ties are long enough to tie in back or bring around back and all the way back to front.

Hem and enjoy.

Kaaren Hoback

Henderson Nevada November 2004

