



How To : Sweater Coat

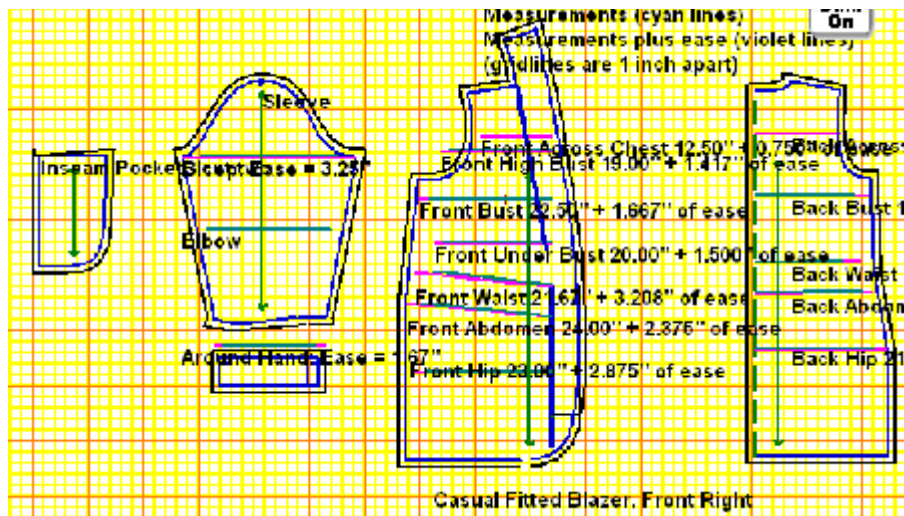
The CASUAL FIT Sweater coat features :

- A modified narrow shawl collar with a band effect down center front.
- a no dart sleeve with wide cuff ,
- a nice shaped curve to the hem finish which is at or slightly above knee.
- A Knit factor of approx 15-20% has been considered.
- This will wear well over a blouse or even light to medium weight sweater.
- Inseam pockets, linings and ¼ inch shoulder pads are included as options.

Fabric Type: and supplies and notions

- “sweater knits” medium to heavy weight.
- Polar fleece
- Fulled wool (Fulled wool= somewhat felted by steam , heat and pressure. Not quite “boiled wool”)
- Lining fabrics any lightweight poly, poly satin, bemberg, ambiance type lining
- Stay tape or seam tape, no pop, seams great or twill tape for shoulders, pocket entries and necklines if your knit is very loose.
- Stitch type: elastic stretch stitch, small zigzag stitch
- Needle type dependant on material stretch or ball point needle for knits.
- You may use a frog or art type closure. Button if you must!
- You may use purchased on hand done knitted ribbing cuffs.

The pattern:

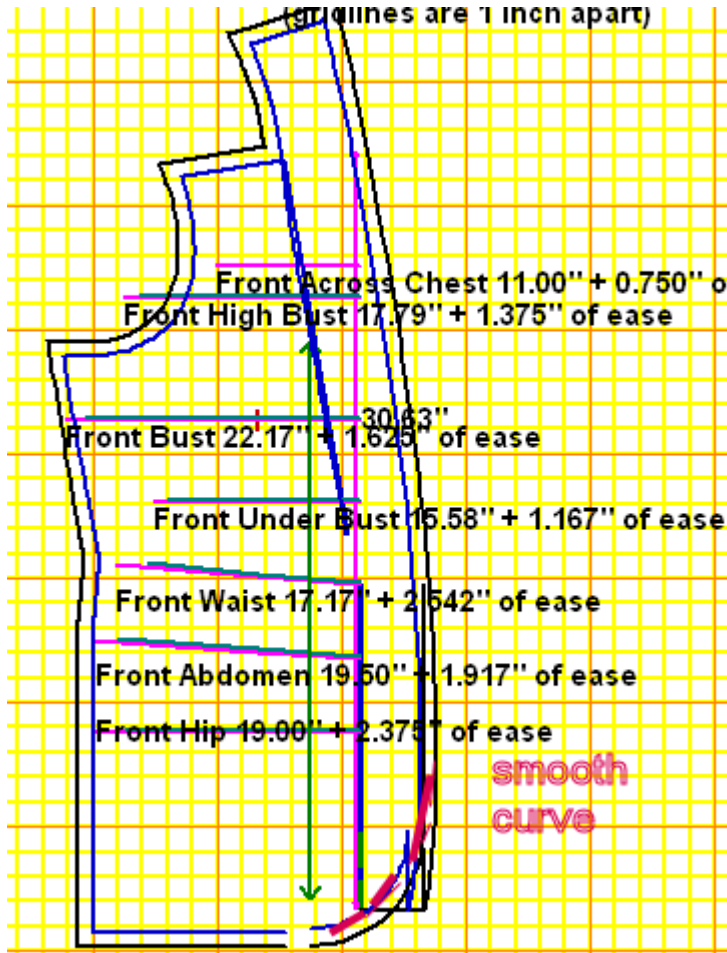


First note that there's NO Mia art.

Sorry , but I broke it for this unique new garment.

I offer you a picture of the finished garment

instead. This is a brand new garment and we didn't get the artist to make a special set of artists renditions for the Sweater Coat. It is also labeled a casual fitted blazer and its not.



You will see the facing and lining pieces once you go to the print menus. The order of printing is front, front lining, back, back lining, sleeve, sleeve lining, facing, and pockets.

The cuff is quite wide which is what I am seeing on this Fall's fashions. It is set to 2.5 inches adjust as desired. (cut 2 this isn't a French cuff)

Some of you may see a bit of a squiggle at the bottom near the cf hem and I will show you a version of this so you can manually fix it.

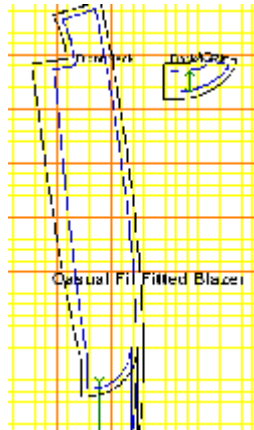
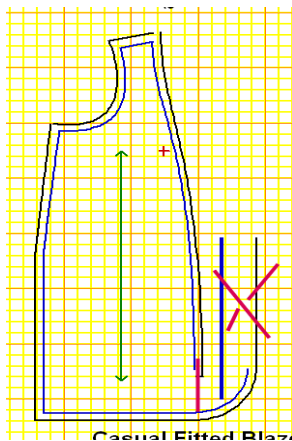
It has to do with how tall you are and how much length I added to this garment. This pattern is not "hard coded" into our menus so some of our normal

smoothing has not been done.

How to work around this. Ignore it! Follow the curve and just ignore the lines.

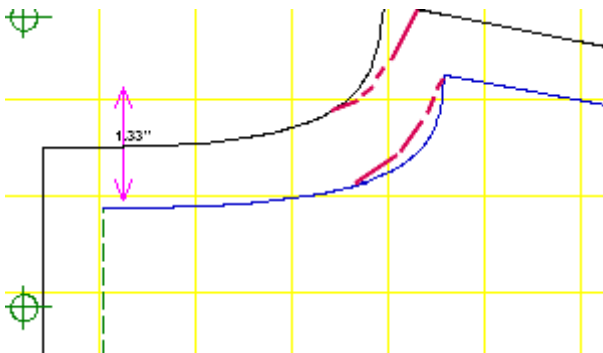
Make sure you True all cut lines to your stitch lines. Seam allowances are 5/8th of an inch.

Pockets and linings come with this draft.



Match your front lining and facing to your front pattern piece and line up your facing and lining pieces on top of the front to make sure everything flows and matches. The facing may be a bit shorter than the front, cut across about 2 inches below bust level and insert extra paper till the facing length matches front. Smooth the cut lines.

The lining pattern has a few stray lines. Ignore them.



If you so desire alter your back neck shape and matching facing.

I do this on ALL patterns. Just make sure the facing matches the back.

Construction Tips:

I would stay tape the shoulders so they don't drift when wearing.. I would also stay tape the pocket entries.

If you are using a knit you make up on your knitting machine Shape the knit when you are making it to the "cartoon" of the pattern.

If you are cutting sweater knit please serge or Hong Kong finish your raw edges to keep from raveling.

You may wish to make the inner pocket (attached to the back pattern piece) from your fashion fabric in case its seen but the upper layer (attached to the front pattern piece in lining fabric to reduce bulk.

The distance down from the arm hole to set in your pockets is personal preference. On average the top of the pocket will be 8-10 inches below the underarm in the side seam.

Place the sweater coat front up against you and check to see where the best fit is for your pocket mark the midline and center the pocket opening on that mark.

Do a test sample of your stitch lengths, serger differential feeds, and in particular your pressing temperatures.

Steam and heat flatten knits!! You may inadvertently felt or melt them depending on fiber content. Checking in advance on a small scrap saves you endless hassles later.

Always USE a Press Cloth , press don't iron and use minimum heat.

Construction order:

Make your shoulder/roll line dart for the shawl "band". Do Not shorten it and Do Not omit it. Its most effective in creating a roll line for the shawl band.

Connect the back extensions of the shawl collar.

Construct your shoulder seams with care and stabilize with a stay tape.

Attach front facing back around neck. I start stitching at center back and stitch down one side, go back to center back and stitch down other side.

Add your cuff to the sleeve

Insert your sleeves while in the flat.

Sew the sleeve underarm from wrist to underarm, pivot and stitch down as far as the top of the pocket insertion.

Insert pockets, use a stay tape on the pocket entry to keep from stretching out. Raise the top of the pocket UP 5/8th inch to clear the seam allowance.

Apply stay tape to the opening side of the pocket. Insert the pockets before finishing the side seam (it's easier) .Once the pocket entry has been stitched right sides facing, turn to inside and stitch the pocket bag together. Trim/grade seam allowance of pocket opening.

Once pockets are inserted continue stitching the side seam closed.

If interested in “bagging your lining “there is an excellent on line article at Threads Magazine on line If bagging your lining you need to leave a side seam open so read the article first!

<http://www.taunton.com/threads/pages/t00034.asp>

Insert your shoulder pads between fashion fabric knit and lining, hand stitch in place.

A sleeve head made of a piece of felted soft wool will support the sleeve cap. You can purchase these or make them from a strip 1.25 inches wide by 8 inches long.

Plan your closure if one is desired. I did not use one on my personal version.

Some details on my sweater coat.

Its made with a fullled wool. Real color is a medium Sage green. This color doesn't photo well. I am holding my version of a bifold “French” ultra suede wallet which is about 2 shades different from the wool. There is a matching hobo bag shown on the first picture of the sweater coat on the dress form.

Fulling is an old term to describe what happens when steam, pressure and heat are applied to a wool knit. It shrinks it and makes it more dense. The stretch factor has been reduced by about 1/2.



I purchased it this way and its really soft and very warm, pure virgin wool.

Its not as “felted” as a boiled wool but it's not as stretchy as a plain sweater knit.

The pocket bag that attaches to the back is the same wool, while the front pocket is made from lining fabric to reduce bulk.

I used “no pop” which is similar to twill tape to stay the shoulders and pocket openings.

I am cheating. There is a temporary hem in this jacket for the photo. My hand is in fact jammed into the pocket which is invisible from the side.

I like my sleeves slightly long which keeps my wrists covered when driving or reaching for something, . The cuff is quite snug, you may widen it if you like.

The matching lining is enroute via UPS and will arrive 1 day after my deadline to get this to you in time for the newsletter. Even unlined this is really nice and comfortable to wear. Ill do the lining because of the almost constant wind at my winter home.

Have Fun and enjoy this timely Fall jacket.

Kaaren W Hoback