

Fringed Jacket



I saw a jacket with similar lines and challenged myself to create it in Dress Shop. The original was made of high quality heavy-weight wool with a loopy fringe attached. Mine is more casual, being made of looper fleece. The underarm seam is open, except for a 2 ½" seam.

How I created the jacket

Design choices – I started with the Kimono blouse (under loungewear), ab length, $\frac{3}{4}$ length sleeves, shawl collar, and front button closure.

Options – I added 6" to the length, set the Hem width to 0, the Facings width to 3", and the Button placket width to 1½".

Ease – I added 4" to bust, waist, ab, hip, and armhole.

Neck – Front neck depth = 7".

At the Computer

Check all the settings to make sure they stuck. Make any adjustments needed.

Fabric choice

This pattern works well with fleece. Choose a fabric what will not ravel when fringed. I used a looper fleece, which is very soft.

Pattern prep

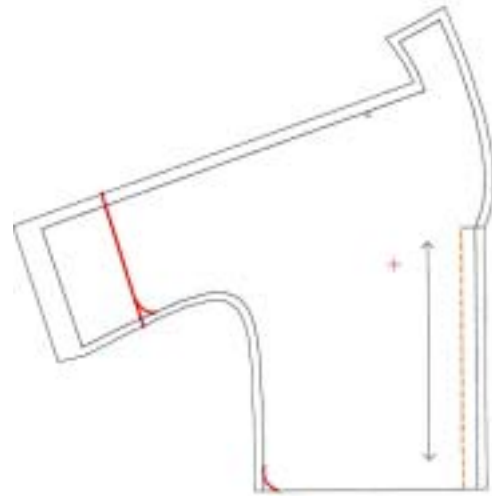
True seam allowances, except for the underarm seam.

Cut 2" from the bottom of the front facing.

Draw a line to shorten the sleeve by 3 ½". Cut on this line.

On the front pattern use a round dish to draw a curve at the bottom and the top of the underarm seam. Match the front and the back at these points and cut both to match on the curve.

Cut off the underarm seam. Cut off the seam allowance on the inside of the facings.



Facings

The facings may not draft as expected. If this happens, you have two choices:

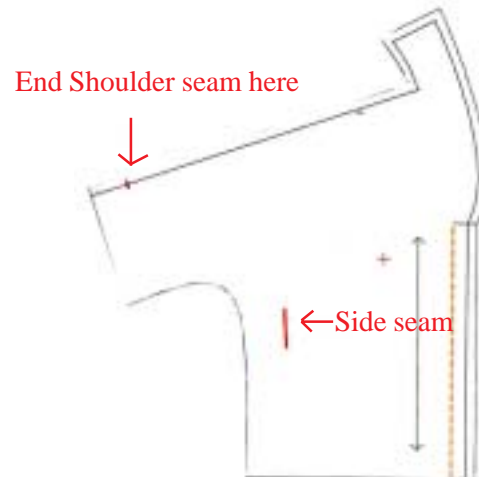
- 1) Draw the facings on the pattern and cut them out.
- 2) Draft a blouse with the same choices (jewel neck, shawl collar, 3" facing width, 1 ½" Button placket width. Print the facing only. True it to your jacket pattern pieces.

Assembly

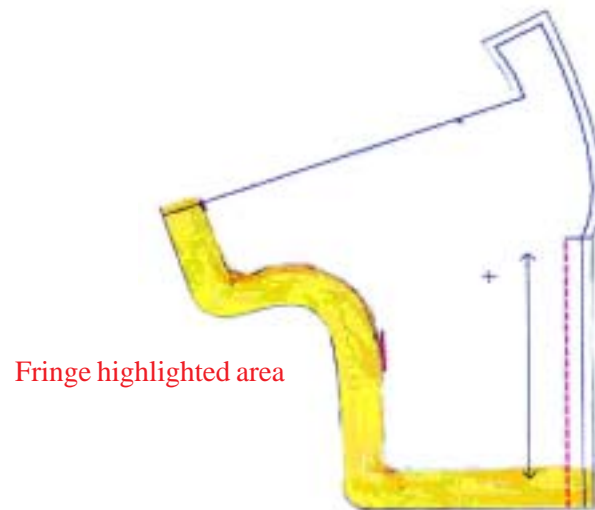
If you are unsure about how to make the shawl collar, see Evelyn Bunbury's instructions on Kaaren's web site.

Shoulder seam - Stop 2" before the end of the seam.

Side Seam – The side seam is only 2 ½" long and is sewn on the OUTSIDE (wrong sides together). Find the point at which the underarm curve starts to straighten. Measure in 2 ¼" and stitch this seam. Be sure to reinforce the seam. I used a narrow zigzag, almost a satin stitch. It is buried in the fleece.



Slash the fabric 2" to make the fringe. Fringe the edge of the sleeves, underarm/side seam, and bottom of the jacket.



Variations

Stitch the entire underarm seam.

Ultrasuede. It will be firmer, but still have a nice look.

Woven fabric – Finish the edges so that the hem, underarm seam, and sleeve edge are 2" from the edge of the pattern. Attach a purchased fringe.